



marathon[™]
Special Products

Product Data Sheet

885 RZ XX

Replace "xx" with 01 through 12 for number of poles

Heavy Duty Terminal Block
Deadfront Type

85 Amps 600 Volts AC/DC

Wire Range

- Line: #4 - #18 AWG Cu
- Load: #4 - #18 AWG Cu

Electrical Ratings

- 85 Amps
- 600V per UL 1059 & CSA 22.2 No.158, class B & C requirements
- SCCR of 10,000 A (default for terminal blocks)
- CU7 - 75°C connector terminal rating with copper wire
- Factory & field wiring

Agency Compliance

- UR - UL recognized terminal block, evaluated to UL 1059, file no. XCFR2.E62806
- cUR - UL evaluated to C22.2 No. 158, file no. XCFR8.E62806

Material Information

- Insulator base:
 - Thermoplastic
 - Flammability rating of insulator base UL94V0
 - Insulator base temperature rating: -40°C to 130°C (UL RTI)
- Collar: aluminum, tin (over copper) plated
- Screws: steel, tin plated
- RoHS compliant

Installation & Accessories

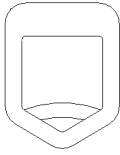
- Mounting (Panel):
 - For use with #10 fastener.
 - Torque mounting fastener to 25-30 lbf.in (2.8 - 3.4 N·m).

A Regal Brand



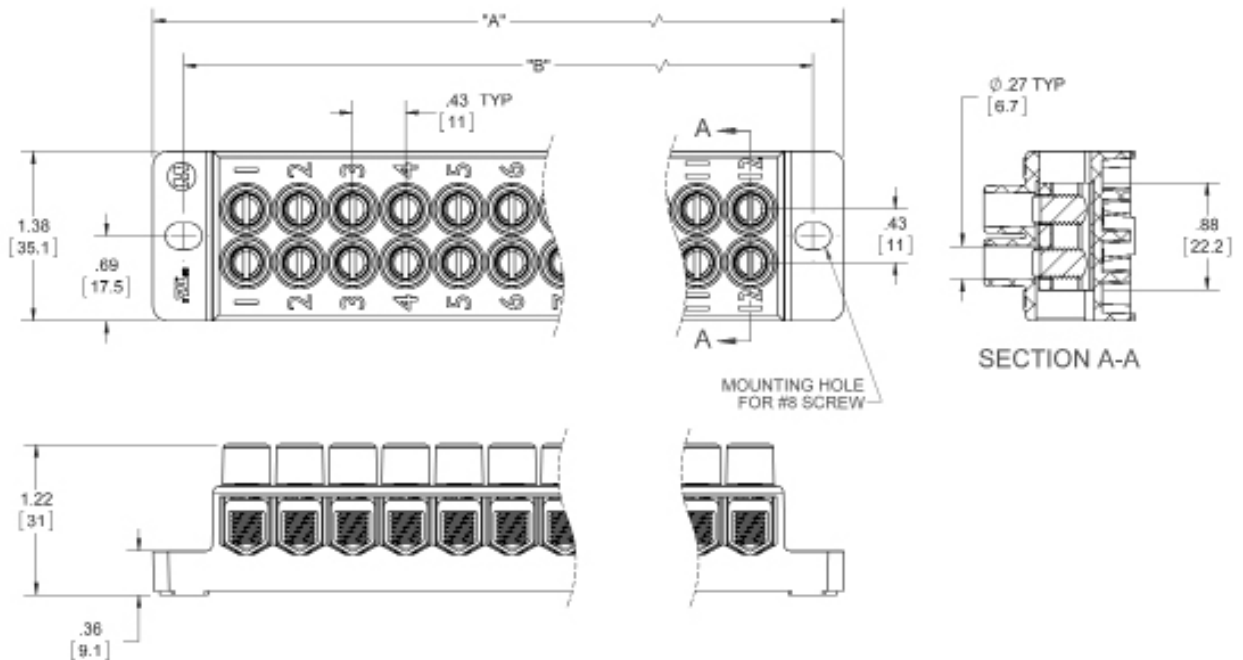
www.regalbeloit.com

Termination Specifications

Line & Load Side	Wire Size (CU Stranded)	Torque	Wires/Terminal	Wire Class (UL)
	#4 AWG - 6 AWG	20 In. lbs	1	B, C
	#8 AWG - 18 AWG	20 In. lbs	1 - 2	B, C, G, H, I (DLO)

Solid copper wire range: 16 AWG - 18 AWG

Drawing



Lines	DIM "A" $\pm .015$ [.38]	DIM "B" $\pm .015$ [.38]
1	1.524 [38.71]	1.020 [25.91]
2	1.956 [49.68]	1.452 [36.88]
3	2.388 [60.66]	1.884 [47.85]
4	2.820 [71.63]	2.316 [58.83]
5	3.252 [82.60]	2.748 [69.80]
6	3.684 [93.57]	3.180 [80.77]
7	4.116 [104.55]	3.612 [91.74]
8	4.548 [115.52]	4.044 [102.72]
9	4.980 [126.49]	4.476 [113.69]
10	5.412 [137.46]	4.908 [124.66]
11	5.844 [148.44]	5.340 [135.64]
12	6.276 [159.41]	5.772 [146.61]